

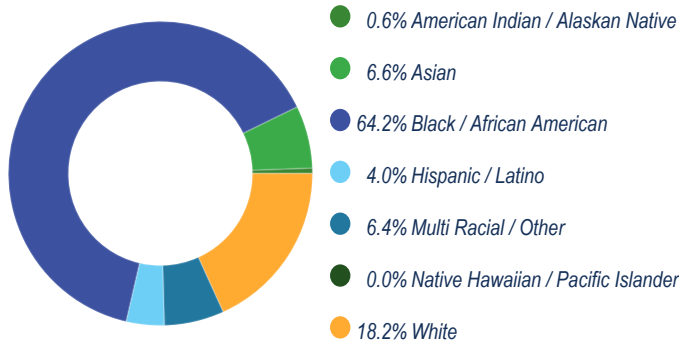


# SCIENCE LEADERSHIP ACADEMY MIDDLE SCHOOL

## 2021-22 SCHOOL PROGRESS REPORT ON EDUCATION AND EQUITY

School Code | 2050 Sector | District Network | Innovation  
Principal Name | Mr Timothy Boyle  
Address | 3610 Warren St  
Phone | 215-400-8320 Website | slams.philasd.org/  
Report Type | Middle School Grades in Report | 5-8  
Admissions Category | Neighborhood  
Turnaround Model | N/A  
Receives HS Report | No  
Oct 1 Enrollment | 346

### Student Enrollment and Demographics



**364**

Total Number of Students Served for  
10+ Days Over the Year

**13.6%**

% Students with IEPs

**1.5%**

% English Learners

**62.7%**

% Economically Disadvantaged

### Student Attendance

**61.5%**

% Students Attending at Least 95%  
of Instructional Days

**81.0%**

% Students Attending at Least 90%  
of Instructional Days

### Score Level

**Level 3**

### Performance

At or Above Target in **50.0 %**  
4 out of 8 Eligible Metrics

### Improvement

Insufficient Data for Score

### Goal Performance (All Students)

**GOAL 1 | PSSA ELA % of Students Proficient  
or Advanced (Grades 3-8)**

**Score: 55.7 %**



13.2 pts above 2021-2022 target

MEETING

no data prior year

**GOAL 2 | PSSA ELA % of Students Proficient  
or Advanced (Grade 3)**

Ineligible by Report Type

**GOAL 3 | PSSA Math % of Students Proficient  
or Advanced (Grades 3-8)**

**Score: 16.9 %**



-11.8 pts from 2021-2022 target

NOT MEETING

no data prior year

- Meeting Target
- Not Meeting Target

### Performance

### Improvement

### Level

#### American Indian / Alaskan Native

Insufficient Data  
for Score

Insufficient Data  
for Score

#### Asian

Insufficient Data  
for Score

Insufficient Data  
for Score

#### Black / African American

Insufficient Data  
for Score

Insufficient Data  
for Score

#### Hispanic / Latino

Insufficient Data  
for Score

Insufficient Data  
for Score

#### Multi Racial / Other

Insufficient Data  
for Score

Insufficient Data  
for Score

#### Native Hawaiian / Pacific Islander

Insufficient Data  
for Score

Insufficient Data  
for Score

#### White

Insufficient Data  
for Score

Insufficient Data  
for Score

#### English Learners

Insufficient Data  
for Score

Insufficient Data  
for Score

#### Students with IEPs

Insufficient Data  
for Score

Insufficient Data  
for Score

#### Economically Disadvantaged

Insufficient Data  
for Score

Insufficient Data  
for Score

# Reading/ELA: Every Student Reads On or Above Grade Level

## Goal 1 - Reading Grades 3-8

School Code | 2050 School Name | Science Leadership Academy Middle School

**Goal 1:** The percentage of students in grades 3-8 who are proficient on the state ELA assessment will grow from 35.7% in August 2019 to 65.0% by August 2026

### PSSA ELA: % of Students Proficient or Advanced, Grades 3-8

All Students, 307 students

**Score: 55.7 %**



**2021-2022 Target: 42.5 %**

13.2 pts above target

**2025-2026 Goal: 65.0 %**

-9.3 pts from target



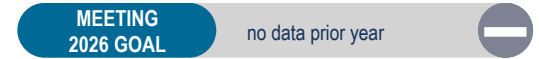
American Indian / Alaskan Native

Insufficient Sample

Asian, 22 students

**Score: 81.8 %**

39.3 pts above target



Black / African American, 199 students

**Score: 41.2 %**

-1.3 pts from target



Hispanic / Latino

Insufficient Sample

Multi Racial / Other

Insufficient Sample

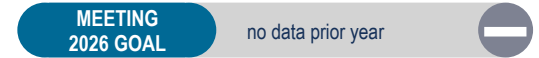
Native Hawaiian / Pacific Islander

Insufficient Sample

White, 57 students

**Score: 87.7 %**

45.2 pts above target



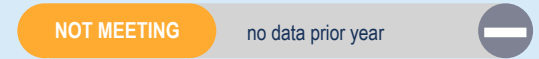
English Learners

Insufficient Sample

Students with IEPs, 41 students

**Score: 17.1 %**

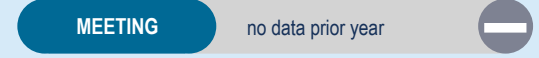
-25.4 pts from target



Economically Disadvantaged, 194 students

**Score: 45.9 %**

3.4 pts above target



- Meeting Target
- Not Meeting Target

# Reading/ELA: Every Student Reads On or Above Grade Level

## Goal 2 - Reading Grade 3

School Code | 2050 School Name | Science Leadership Academy Middle School

**Goal 2:** The percentage of 3rd grade students who are proficient on the state ELA assessment will grow from 32.5% in August 2019 to 62.0% by August 2026

### PSSA ELA: % of Students Proficient or Advanced, Grade 3

#### All Students

Ineligible by Report Type

American Indian / Alaskan Native

Ineligible by Report Type

Asian

Ineligible by Report Type

Black / African American

Ineligible by Report Type

Hispanic / Latino

Ineligible by Report Type

Multi Racial / Other

Ineligible by Report Type

Native Hawaiian / Pacific Islander

Ineligible by Report Type

White

Ineligible by Report Type

English Learners

Ineligible by Report Type

Students with IEPs

Ineligible by Report Type

Economically Disadvantaged

Ineligible by Report Type

● Meeting Target

● Not Meeting Target

# Math & Science: Every Student Performs On or Above Grade Level

## Goal 3 - Math Grades 3-8

School Code | 2050 School Name | Science Leadership Academy Middle School

**Goal 3:** The percentage of students in grades 3-8 who are proficient on the state Math assessment will grow from 21.6% in August 2019 to 52.0% by August 2026

### PSSA Math: % Students Proficient or Advanced, Grades 3-8

All Students, 308 students

Score: **16.9 %**



2021-2022 Target: 28.7 %

-11.8 pts from target

2025-2026 Goal: 52.0 %

-35.1 pts from target

NOT MEETING

no data prior year

### PSSA Science

% of Students Proficient or Advanced in Science (Grades 4 and 8)

35.4 %

23 out of 65 students

American Indian / Alaskan Native

Insufficient Sample

Asian, 23 students

Score: **30.4 %**

1.7 pts above target

MEETING

no data prior year

Black / African American, 201 students

Score: **3.5 %**

-25.2 pts from target

NOT MEETING

no data prior year

Hispanic / Latino

Insufficient Sample

Multi Racial / Other

Insufficient Sample

Native Hawaiian / Pacific Islander

Insufficient Sample

White, 56 students

Score: **51.8 %**

23.1 pts above target

MEETING

no data prior year

English Learners

Insufficient Sample

Students with IEPs, 41 students

Score: **7.3 %**

-21.4 pts from target

NOT MEETING

no data prior year

Economically Disadvantaged, 193 students

Score: **8.3 %**

-20.4 pts from target

NOT MEETING

no data prior year

# Climate, Culture & Opportunity

## Guardrail 1 - Welcoming and Supportive Schools

School Code | 2050 School Name | Science Leadership Academy Middle School

**Guardrail 1:** Every school will be a safe, welcoming and healthy place where our students, staff and community want to be and learn each day. This means that our schools will be: 1) environmentally safe and clean; and 2) spaces with inclusive climates that provide students with access to robust social, emotional, and mental health supports.

### School Climate Score

Score: 7.3



2021-2022 Target: 7.0  
0.3 pts above target

2025-2026 Goal: 7.0  
0.3 pts above target



### School Climate Survey

6.7/10  
Student Rating

9.1/10  
Parent Rating

7.0/10  
Teacher Rating

### School Instruction Score

Score: 7.3



2021-2022 Target: 8.0  
-0.7 pts from target

2025-2026 Goal: 8.0  
-0.7 pts from target



### School Instruction Survey

7.6/10  
Student Rating

7.5/10  
Parent Rating

6.8/10  
Teacher Rating

- Meeting Target
- Not Meeting Target



Yes

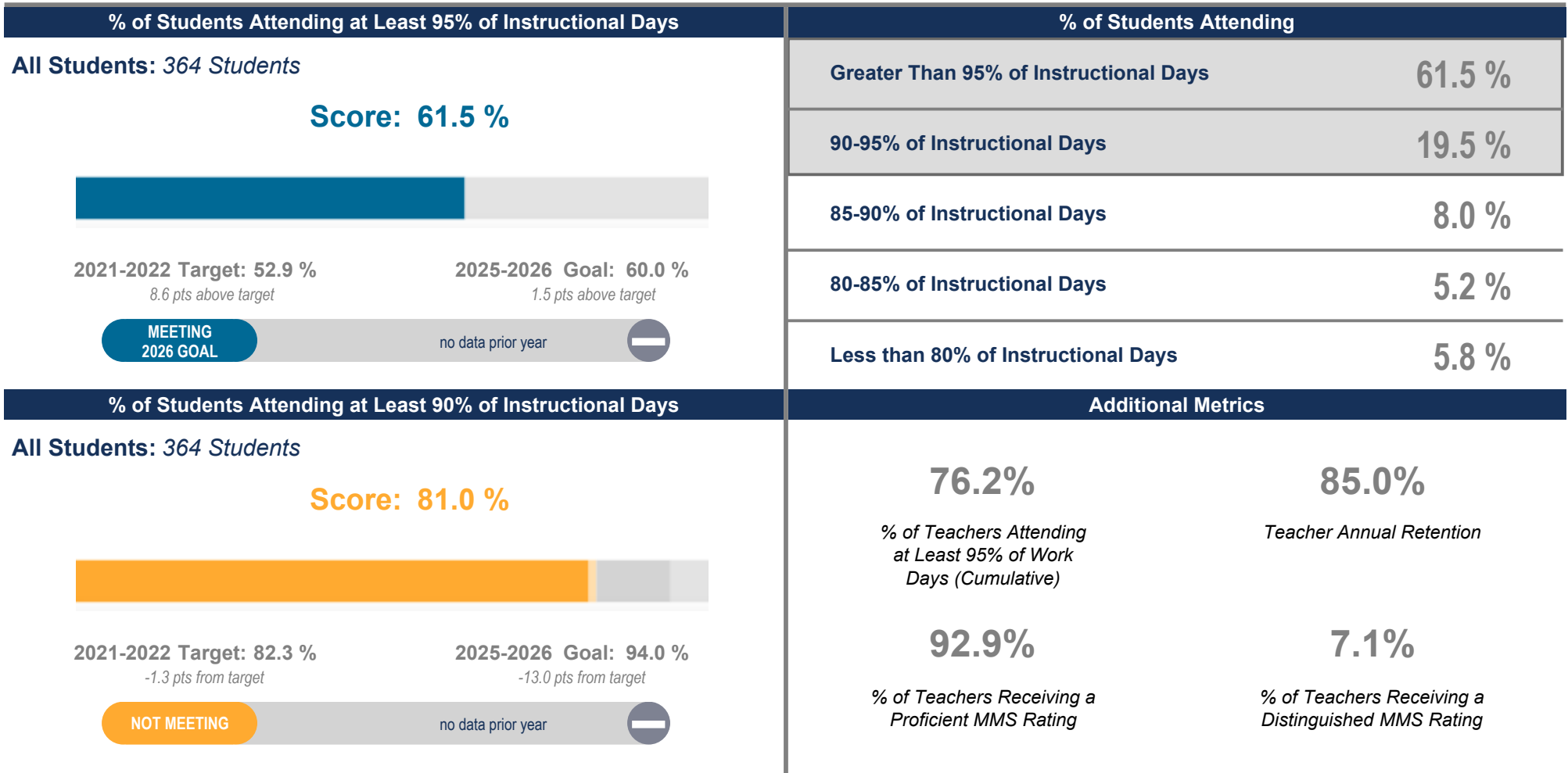
School Has at Least 2 Behavioral/Mental Health Support FTEs per 500 Students

# Climate, Culture & Opportunity

## Guardrail 1 - Welcoming and Supportive Schools

School Code | 2050 School Name | Science Leadership Academy Middle School

**Guardrail 1:** Every school will be a safe, welcoming and healthy place where our students, staff and community want to be and learn each day. This means that our schools will be: 1) environmentally safe and clean; and 2) spaces with inclusive climates that provide students with access to robust social, emotional, and mental health supports.



- Meeting Target
- Not Meeting Target

# Climate, Culture & Opportunity

## Guardrail 2 - Enriching and Well-rounded School Experiences

## Guardrail 3 - Partnering with Parents / Family Members

School Code | 2050 School Name | Science Leadership Academy Middle School

**Guardrail 2:** Every student will have a well-rounded education with co-curricular opportunities, including arts and athletics, integrated into the school experience.

**Guardrail 3:** Every parent and guardian will be welcomed and encouraged to be partners in their child's school community.

### % of Students Participating in Visual / Performing Arts

% of Students  
Participating in Visual /  
Performing Arts

99.4 %

332 out of 334 students

### School Relationship Score

Score: 8.2



2021-2022 Target: 8.0

0.2 pts above target

MEETING  
2026 GOAL

no data prior year

### Additional Metrics



Yes

School Has a SAC/Parent Advisory Group



Yes

School Has a SAC/Parent Advisory Group That Meets Regularly



4

Number of SAC/Parent Advisory Group Meetings

- Meeting Target
- Not Meeting Target

# Climate, Culture & Opportunity

## Guardrail 4 - Addressing Racist Practices

School Code | 2050 School Name | Science Leadership Academy Middle School

**Guardrail 4:** Our students' potential will not be limited by practices that perpetuate systemic racism and hinder student achievement.

